

# Reference Book

Radisson Collection Hotel — Georgia, Tsinandali



Reynaers  
Aluminium

Windows.  
Doors.  
Curtain Walls.

Together for better

[www.reynaers.com](http://www.reynaers.com)

Almost everything starts with a dream, a vision. With imagination, enthusiasm and a little help from Reynaers Aluminium, your dream becomes a project that will soon become reality.

Reynaers Aluminium has developed a leading position in the aluminium industry in Belgium and in the rest of the world. We have achieved this position through reliable partnerships with every one of our stakeholders. Whether it's the investors, engineers, architects, suppliers, salespeople or project developers... we all work closely together to reinforce our position as a best in class provider of standard systems or matching solutions for the needs of your projects.

Our team strives to keep expanding its knowledge and dynamism by staying in close contact with all our stakeholders. We are convinced that these close partnerships allow us to keep responding to our partners' needs and that it supports us in strengthening our position as a reliable and inspirational partner.

Some breathtaking projects that we have done together with our partners can be found in this reference book and are proof of our superb technical quality and our dedication to keep meeting the highest demands in architectural excellence.

You can rest assured that with Reynaers Aluminium, your project is in the right hands from start to finish. Not only today, but also in the future we will keep working...

Together  
for better

# Together for better

Our success is the result of a close collaboration with our partners. Our projects are living proof of the synergies we have created with investors, suppliers, project developers, architects and fabricators all over the world. We want our clients to know that they can count on us, today and in the future. As long as we work together, we will continue to improve our designs and systems. So let's work together. Together for better.

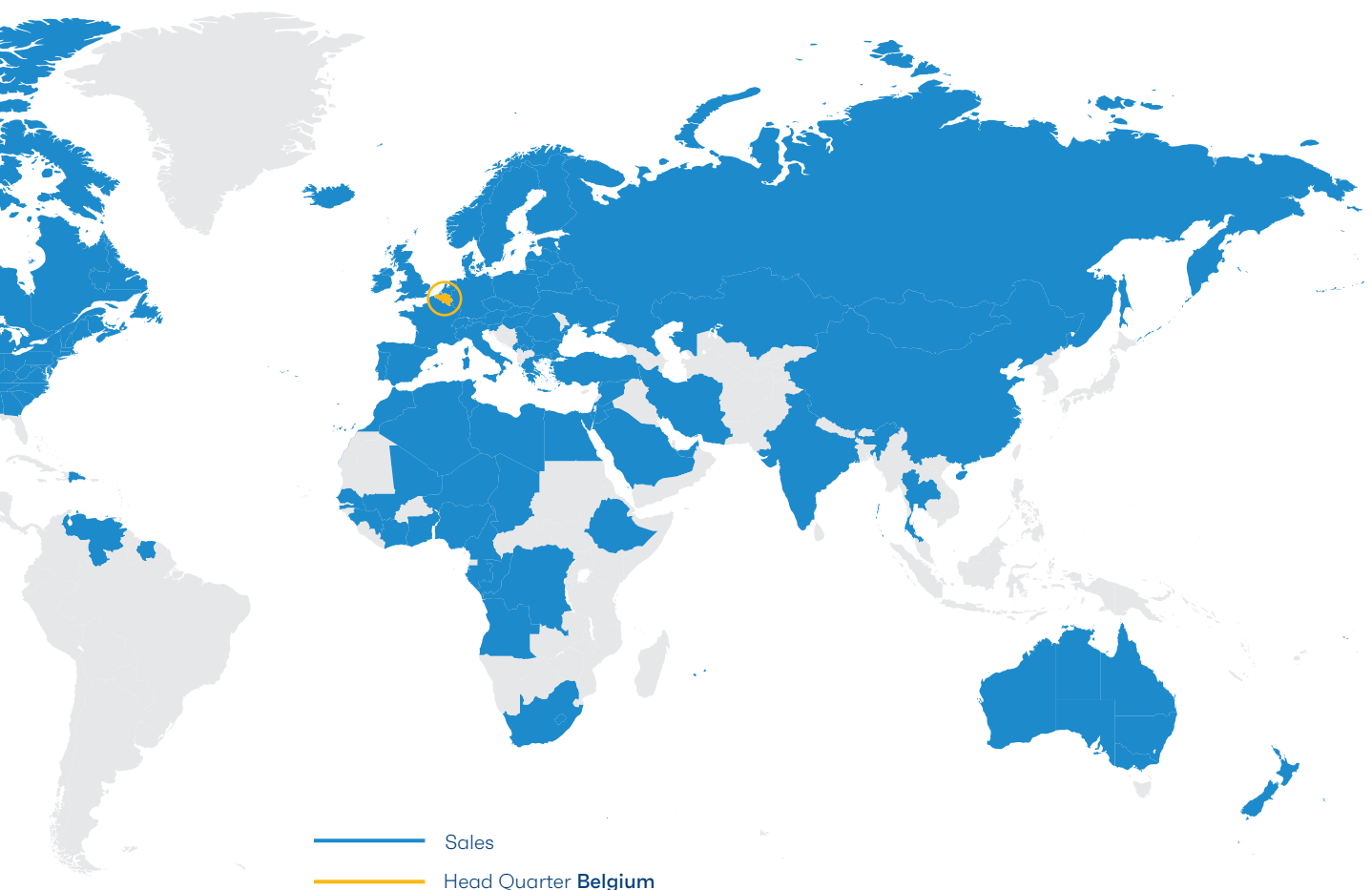
## Reynaers Aluminium

Reynaers Aluminium develops and sells innovative and sustainable aluminium systems for the building industry. Our goal is to increase the architectural value of buildings and enhance the living and working environment of people worldwide. Comfort, security, architectural design and energy-efficiency come first in the development of our products. Reynaers systems are processed by fabricators and construction companies into windows, doors, sliding modules, conservatories, façades, skylights, sunscreening systems and solutions for solar panel integration. We provide solutions for all types of architectural styles for both the residential (new build and renovation) and project market (apartments, office buildings, hotels, shopping centres, public buildings, schools, hospitals, etc.).



# Facts & Figures

Reynaers Aluminium has been founded in 1965, is currently employing over 2400 workers in more than 40 countries worldwide and exporting to more than 70 countries on 5 continents. Reynaers Group achieved an annual turnover of over 555 million euros in 2020.



offices  
**40**  
countries

sales  
**70**  
countries

**12**  
distribution  
centres

**5**  
insulation  
sites

**3**  
paint  
sites

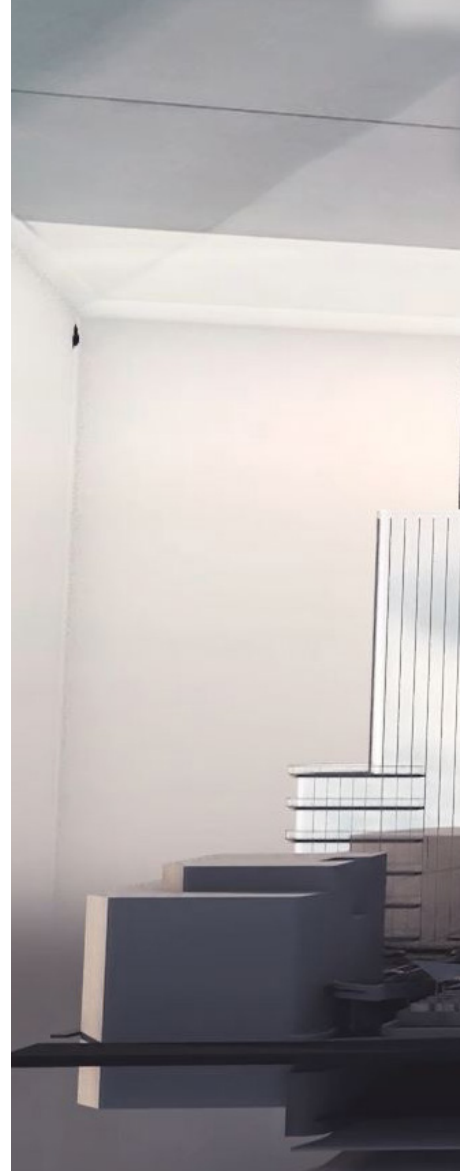
**6**  
training  
centres

**3**  
test  
centres

# The Reynaers Campus

The Reynaers Campus is the corporate headquarters of the Reynaers Group in Duffel (Belgium). The Reynaers Campus is the inspiring and dynamic work environment of all Reynaers employees and a place for partners to experience the latest products and innovations in full interactivity.

At the Reynaers campus, you can visit the **Experience Centre** that is designed to bring people together and inspire you with our latest solutions and state-of-the-art technologies for architectural building solutions. In the Experience Room, you can discover our unique offering, assisted by inspiring digital applications. For a full immersive experience, a visit to **Avalon** can be booked where you can visit future buildings through a shared virtual reality experience. The Technology Centre is the largest privately owned innovation and testing centre, used for the validation of architectural and high-tech window, door and façade concepts.





# Avalon

Avalon, the Virtual Reality Room at the Reynaers Campus in Belgium, lets you visit future buildings through a shared virtual reality experience. Imagine walking into a building that is still in the design phase. Together with your project partners you can navigate through different spaces and review any design aspect by adjusting dimensions of rooms or building elements and change colours and materials. This powerful tool radically changes the way the design of a building is evaluated and visualized.

## For who?

The Avalon VR Room creates an ideal environment for joint experience and collaboration between architects, investors, contractors, and Reynaers experts. You can bring together the different stakeholders of your project for a virtual visit and 3D-evaluation of buildings and solutions.

## What can Avalon do for you and your project?

Avalon turns your architectural 3D-model (Revit, Archicad, Sketchup, Navisworks,...) into a virtual model you can step into, enabling you to review all kinds of design and technical aspects from inside or around the building. A dedicated model of both a high-rise office building and private house is created to be able to exchange, configure and experience Reynaers products. Changes to the model can be in realtime, allowing you and the customer to evaluate the different options most realistically and improving the decision-making process.



LEVEL 2 East



Residential private	10
Residential projects	30
Office Buildings	58
Public Buildings	86
Hotels	102
Leisure	108

**Residential private**

# Flexhouse

**Architect**  
Stefan Camenzind

**Location**  
Switzerland, Zurich

**Reynaers systems**  
ConceptPatio 155 (-LS)  
ConceptSystem 86-HI







## Martis Camp lot 631



**Architect**  
Bohlin Cywinski Jackson

**Location**  
US, Lake Tahoe

**Reynaers systems**  
SlimLine 38  
ConceptPatio 155  
ConceptWall 50



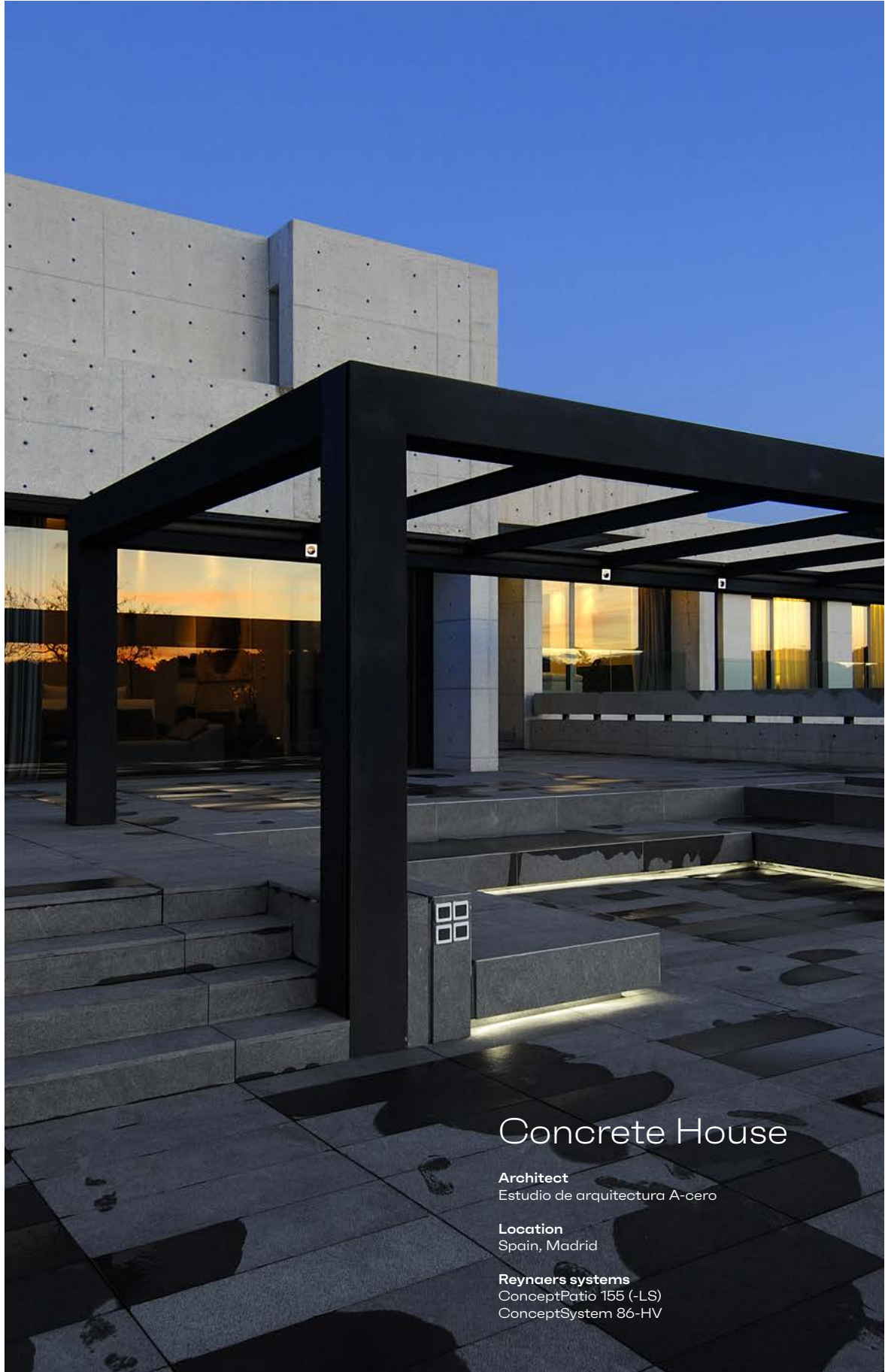
# Villa Maasmechelen

**Location**  
Belgium, Maasmechelen

**Reynaers systems**  
MasterLine 8  
ConceptPatio 155







## Concrete House

**Architect**  
Estudio de arquitectura A-cero

**Location**  
Spain, Madrid

**Reynaers systems**  
ConceptPatio 155 (-LS)  
ConceptSystem 86-HV





## The giving tree



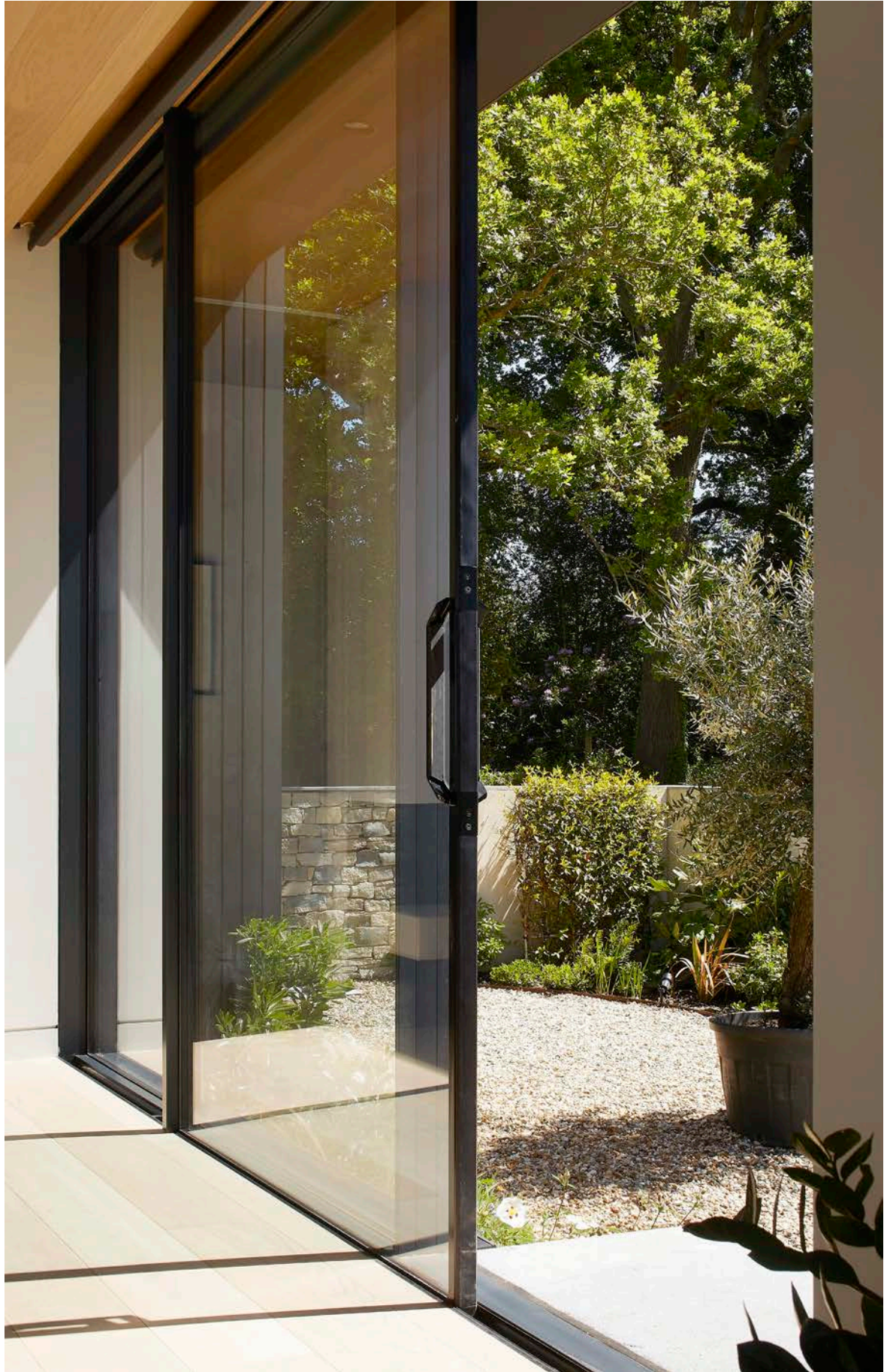
**Architect**  
Faulkner Architects

**Location**  
United States, North Carolina

**Reynaers systems**  
ConceptSystem 68  
ConceptPatio 130 (-LS)  
ConceptWall 50









## Island Rest



**Architect**  
Ström Architects

**Location**  
Isle of Wight, UK

**Reynaers systems**  
HiFinity





# Heaven 11

**Architect**

Ark architects

**Location**

Spain, Marbella

**Reynaers systems**

HiFinity

ConceptSystem 77

ConceptSystem 50

ConceptPatio 68

ConceptPatio 155



## The Brouwhuis



**Architect**  
Bedaux de Brouwer Architecten

**Location**  
The Netherlands, Oisterwijk

**Reynaers systems**  
ConceptSystem 77  
ConceptPatio 130 (-LS)  
ConceptWall 50









## Percy Lane

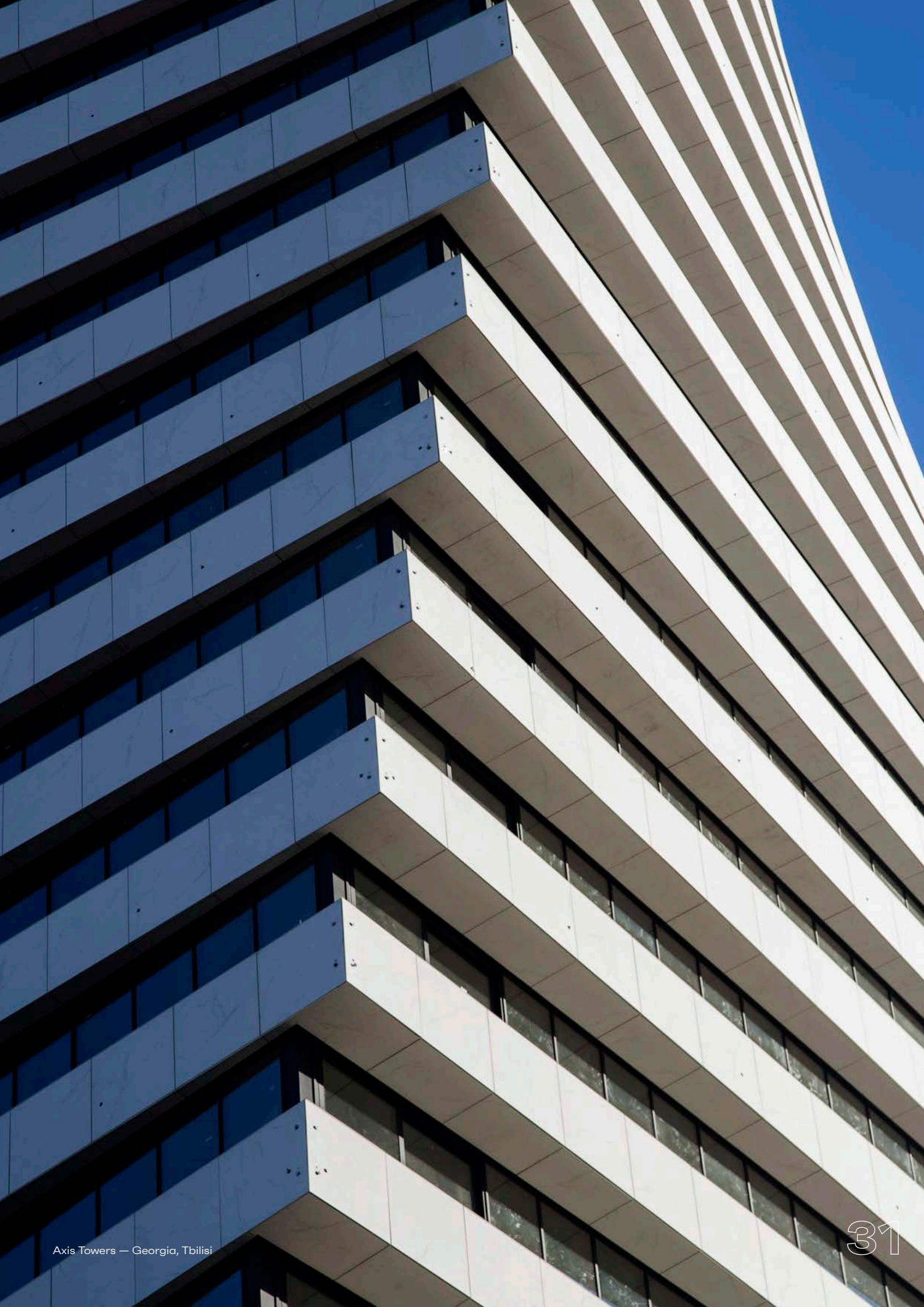


**Architect**  
ODOS Architects

**Location**  
Ireland, Dublin

**Reynaers systems**  
ConceptSystem 77-FP  
ConceptPatio 155 (-LS)

# Residential projects







## Axis Towers



**Architect**  
Nino Mosulishvili,  
Nikoloz Kilasonia,  
Alexander Mezhevidze,  
Gega Astakhishvili

**Location**  
Georgia, Tbilisi

**Reynaers systems**  
ConceptSystem 77  
ConceptPatio 130  
ConceptPatio 155 (-LS)  
ConceptWall 50

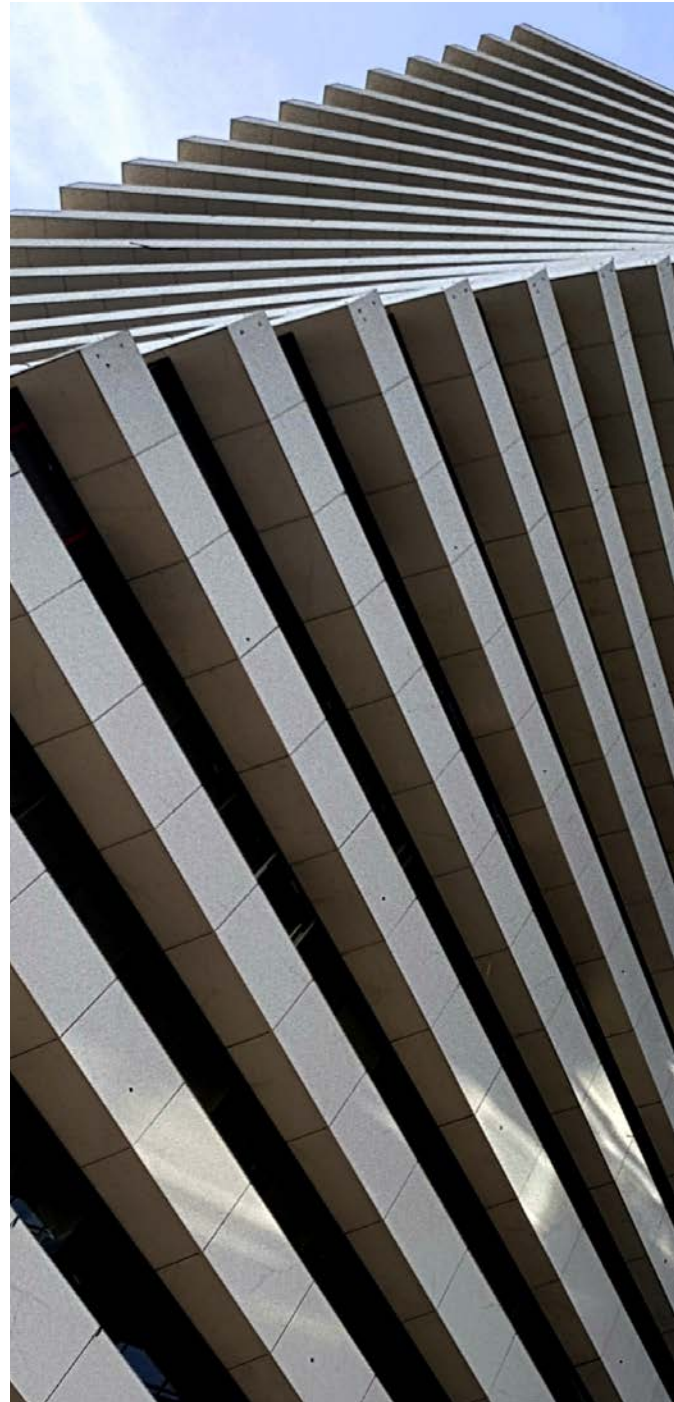
Axis Towers, located in the Vake district of Tbilisi, on Chavchavadze Avenue, behind the statue of Galaktion, is a symbol of modern Tbilisi. The twin towers with their unique architecture, engineering solutions, multifunctionality and scale are a national pride of Georgia.

### City within a city

Axis Towers is designed on the principle of a “city within a city.” The infrastructure was developed with different day-to-day functions in mind, which allows residents to live, work and relax without leaving the building. In addition to the building itself, the developer set himself the task of creating a public space on the grounds of the complex in order to satisfy the need of the city for pedestrian zones. The street, which connects Chavchavadze Avenue with Abuladze Street, will be entirely devoted to a recreation area. It will house cafes, restaurants and open spaces, the area will become a meeting place for both residents and tourists in Tbilisi.

### Complex engineering

The towers are mounted in the opposite direction from each other, creating the illusion of rotation. They are both similar and different from each other. One of the towers is lined with dark glass, the second with white stone. In addition to colour, the contrast of light and heavy materials is used to showcase the difference between the buildings. The main components of the frame construction of the buildings are the rod in the center and twelve massive pylons around it in each tower. Among the complex engineering solutions is the system of piles, the depth of which exceeds 30 meters. The total length of horizontal and vertical piles is 18 km. The constructive design meets all international standards. International engineering companies such as Europroject and Hinman participated in its examination. The Axis Towers model was tested in a wind tunnel for various types of loads at the Institute of Applied Sciences at the Prague Academy.



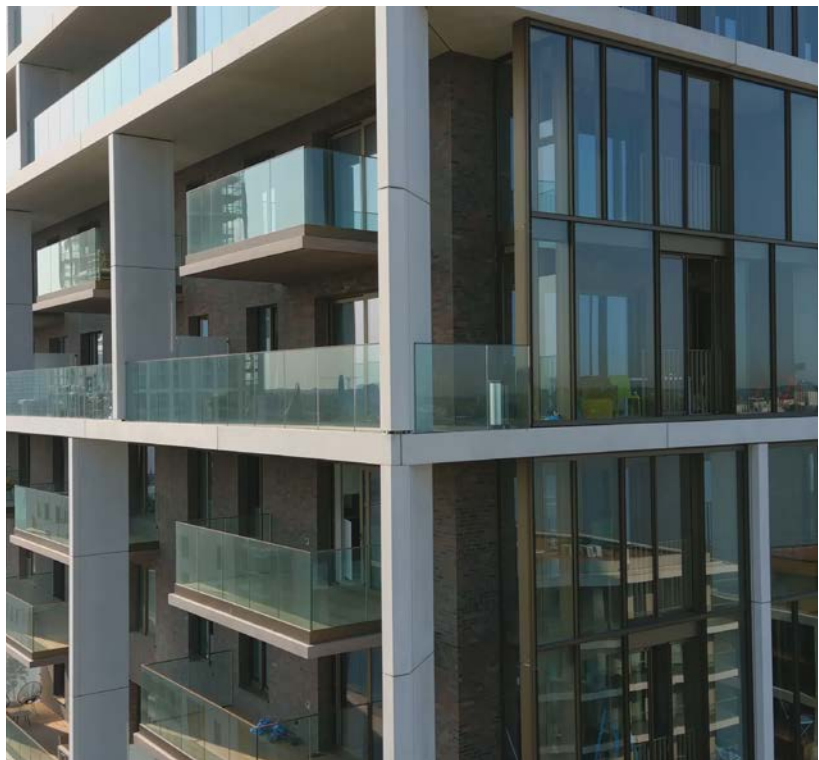


*“Axis towers consists of two towers: stone tower and glass tower, which combine living spaces, a hotel, office spaces, restaurants, a fitness center with a swimming pool, and a retail space.”*





## Scheldezicht



**Architect**  
BRUT architecture, C.F. Møller

**Location**  
Belgium, Antwerp

**Reynaers systems**  
ConceptPatio 155 (-LS)  
MasterLine 8  
ConceptWall 60

# Millennium Centre Towers

**Architect**  
Amfion

**Location**  
Bulgaria, Sofia

**Reynaers systems**  
ConceptPatio 155 (-LS)  
ConceptWall 86 -EF





Media Group



# The Kite

**Architect**  
Borislav Bogdanov

**Location**  
Bulgaria, Sofia

**Reynaers systems**  
ConceptWall 50  
ConceptSystem 77





# Prata Riverside Village

**Architect**  
Renzo Piano Building Workshop  
(RPBW)

**Location**  
Portugal, Lisboa

**Reynaers systems**  
HiFinity  
SlimLine 38  
ConceptSystem 59PA  
ConceptWall 50

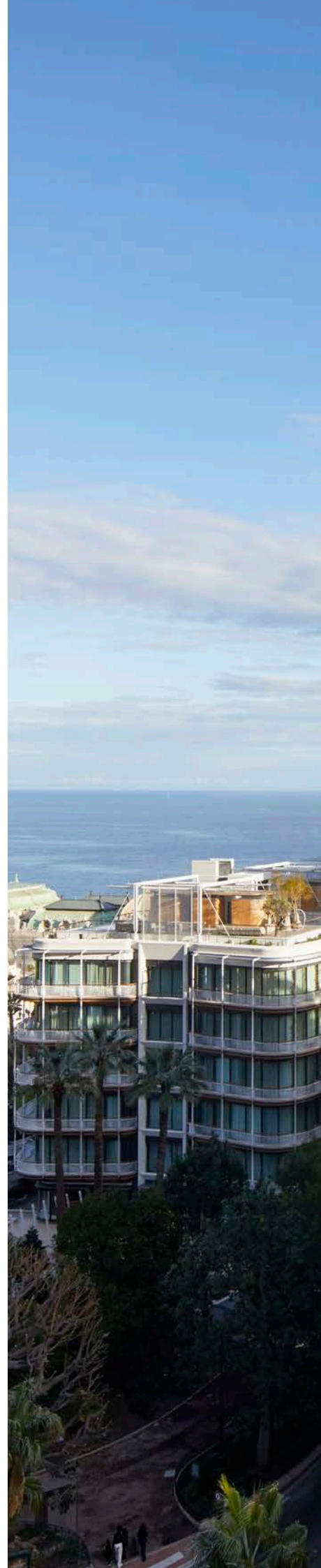
## Carré Or



**Architect**  
Alexandre Giraldi

**Location**  
Monaco, Montecarlo

**Reynaers systems**  
HiFinity







## Fenix I



**Architect**  
Mei architects

**Location**  
The Netherlands,  
Rotterdam

**Reynaers systems**  
ConceptSystem 77  
SlimLine 38  
ConceptPatio 130 (-LS)  
ConceptWall 50

With its steel and concrete vertical extension positioned on top of a hundred-year-old port warehouse, Fenix I is a new landmark for Rotterdam. An ingenious 1.5-million-kilogram steel construction connects old and new in this unique project.

The former warehouse has been redeveloped to incorporate a mix of catering, theatre and commercial establishments, while the newly built residential volume consists of 200 apartments.

*“Katendrecht is one of the most sought-after residential districts in Rotterdam. It would be great if Fenix were to become the symbol of regained pride of Katendrecht.”*





## Intriguing construction

In the Rotterdam Katendrecht district, Fenix I is an intriguing construction: how can such a colossal glass, steel and concrete building be positioned on top of this age-old port warehouse? The brick walls of this monumental building could not possibly carry this load. And yet, the new build, consisting of no fewer than nine residential levels without a visible supporting structure, connects seamlessly with the warehouse. 'Almost forty steel columns were driven through the old building,' Robert Winkel of Mei Architects & Planners explains. 'A "tabletop" was placed on top of this steel construction, as it were, on which the concrete new build was constructed with lattice girders. Construction-wise, they are two separate buildings. In total, 1.5 million kilograms of steel was used in this construction.'

## Public walkway

In reality, both buildings are interconnected. Winkel explains: 'The entrance to the lofts is situated in a walkway in the old warehouse, with residents walking past the lecture rooms of Codarts Rotterdam and Circus Rotjeknor. The lift then takes them literally through the roof of the warehouse to their apartments. This roof has been opened up above the walkway so that you can already see your own apartment from the ground floor.' During the day, this interior walkway is open to the public to access the restaurants on the quay via Veerlaan. This creates unexpected meetings between residents, passers-by and young artists.'







## Sixty5



**Architect**  
Diederendirrix

**Location**  
Netherlands, Eindhoven

**Reynaers systems**  
SlimLine 38  
ConceptSystem 77

# A3 Advanced Architecture Apartments

**Architect**  
STARH EOOD,  
Architect Svetoslav Stanislavov

**Location**  
Bulgaria, Sofia

**Reynaers systems**  
ConceptSystem 77  
ConceptWall 50





# Banyantree Residences Riverside Bangkok

**Architect**  
SODA Architects, CAPA Architects

**Developer**  
Nirvana River

**Location**  
Thailand, Bangkok

**Reynaers systems**  
ConceptPatio 130  
ConceptPatio 155









## Subbota

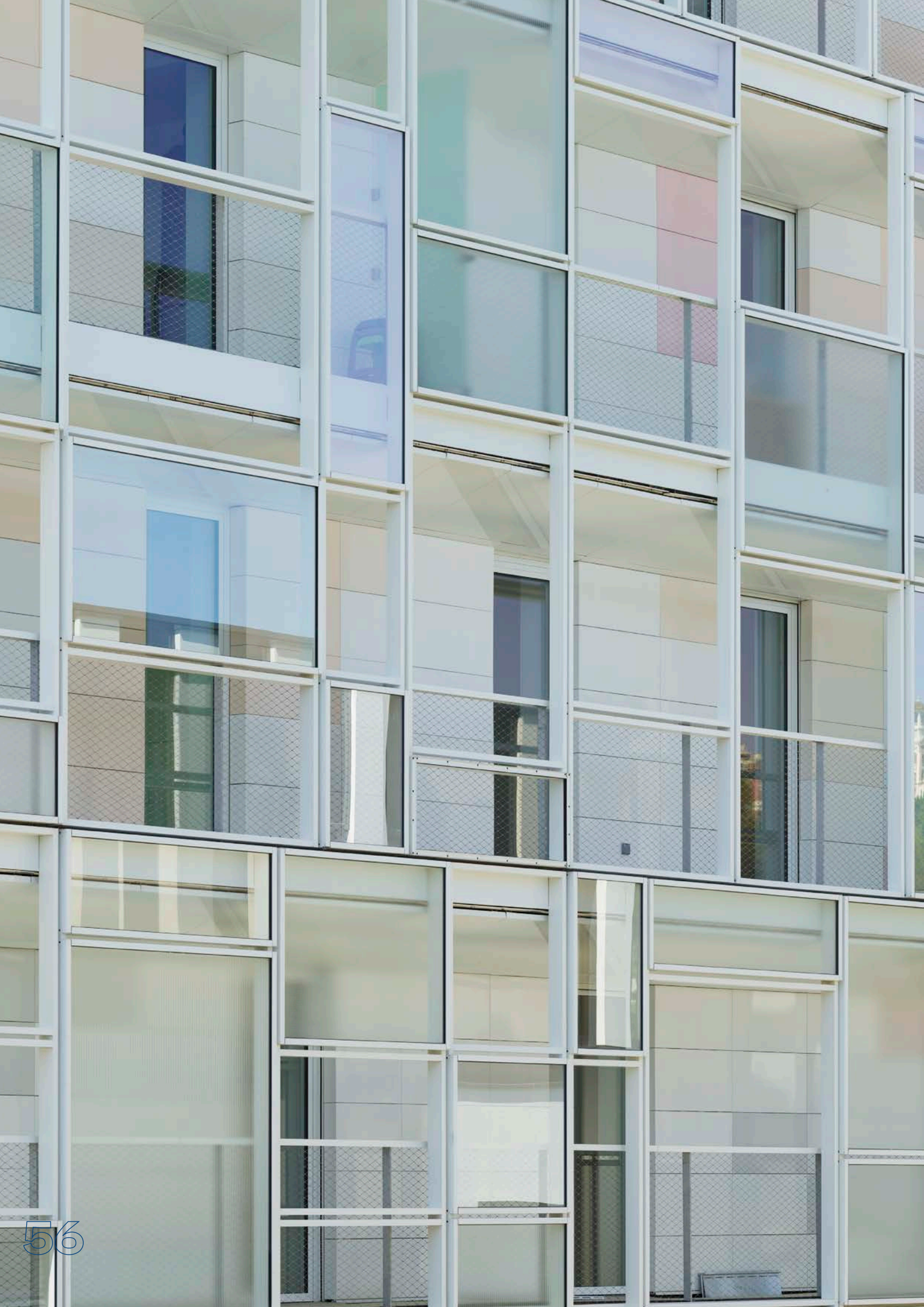


**Architect**  
UNK project

**Investor**  
CJS Donstroyinvest

**Location**  
Russia, Moscow

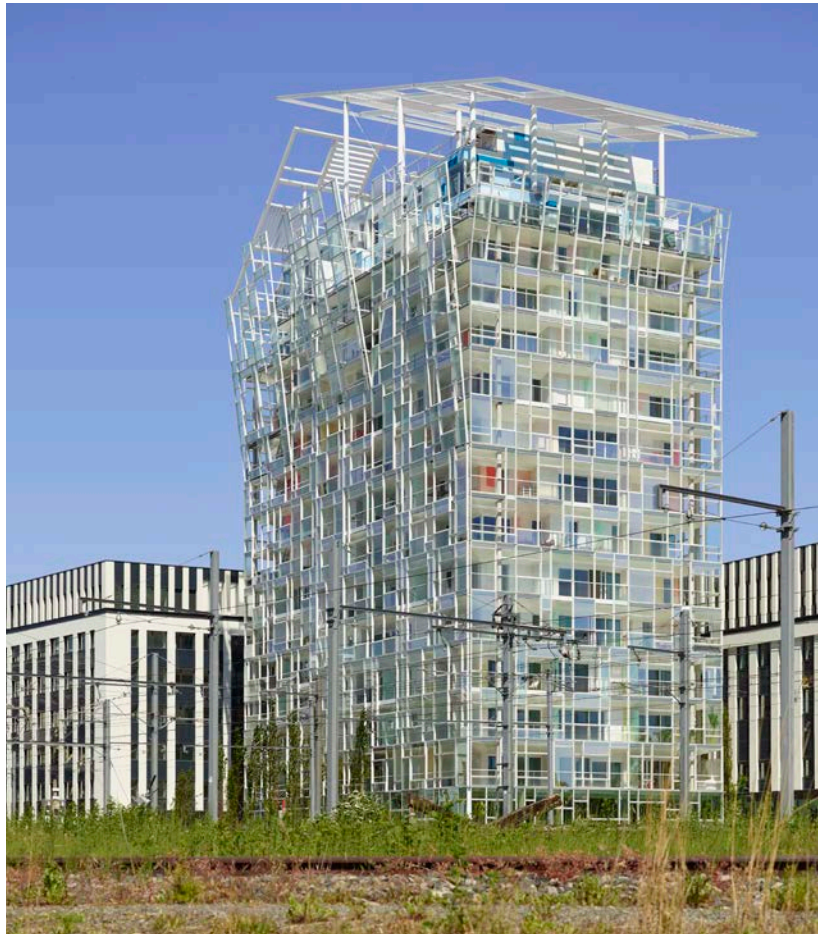
**Reynaers systems**  
ConceptSystem 86  
ConceptSystem 77  
ConceptWall 50







## Tour Ycone



**Architect**  
Ateliers Jean Nouvel

**Location**  
France, Lyon

**Reynaers systems**  
ConceptPatio 130  
ConceptPatio 68  
Thermo System 68 (French system)

# Office buildings





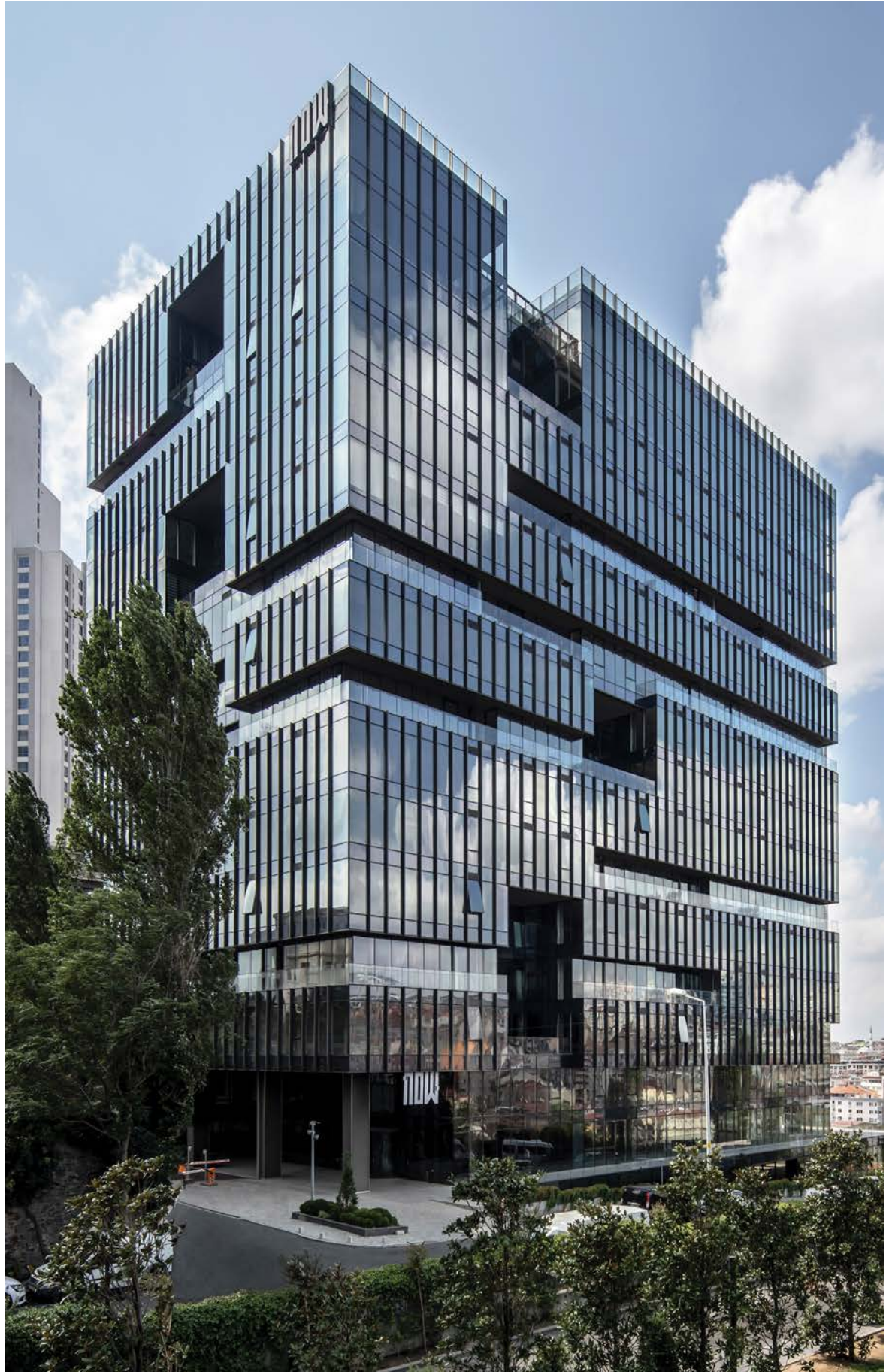
## Now Bomonti



**Architect**  
Tabanlıoğlu Architects

**Location**  
Turkey, Istanbul

**Reynaers systems**  
ConceptSystem 68  
ConceptPatio 155  
HiFinity  
ConceptWall 60







## Dominion Tower



**Architect**  
Zaha Hadid

**Location**  
Russia, Moscow

**Reynaers systems**  
ConceptSystem 77  
ConceptFolding 77  
ConceptWall 50-RA/FRV  
ConceptWall 50-SC

# Fiteco

**Architect**  
Colboe Franzen & Associées

**Location**  
France, Changé

**Reynaers systems**  
ConceptWall 86-VEC







# Jaam Tower

**Architect**  
Fluid Motion Architects  
- Mr. Daheshmir

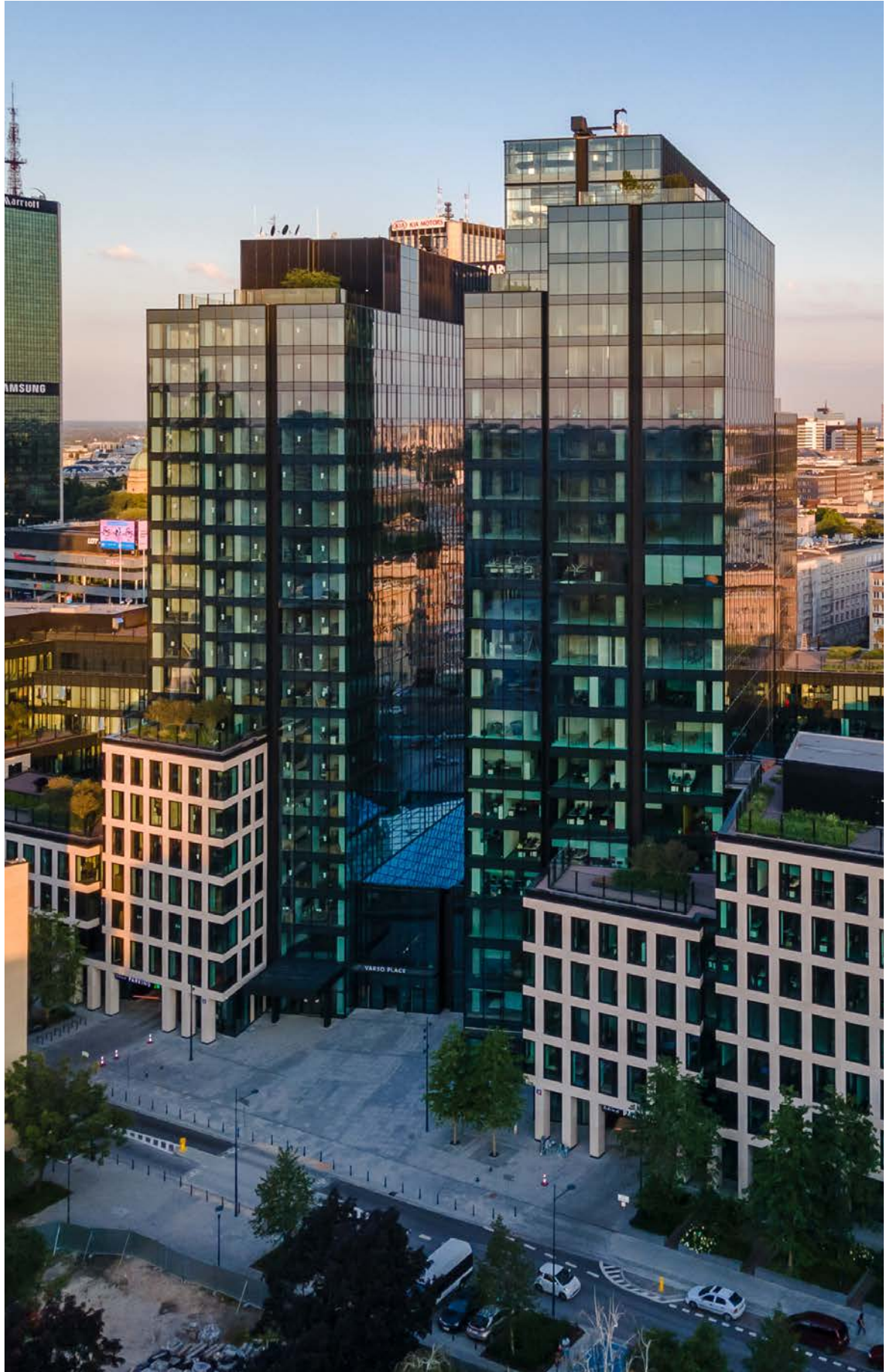
**Location**  
Iran, Teheran

**Reynaers systems**  
ConceptSystem 68  
ConceptsWall 60

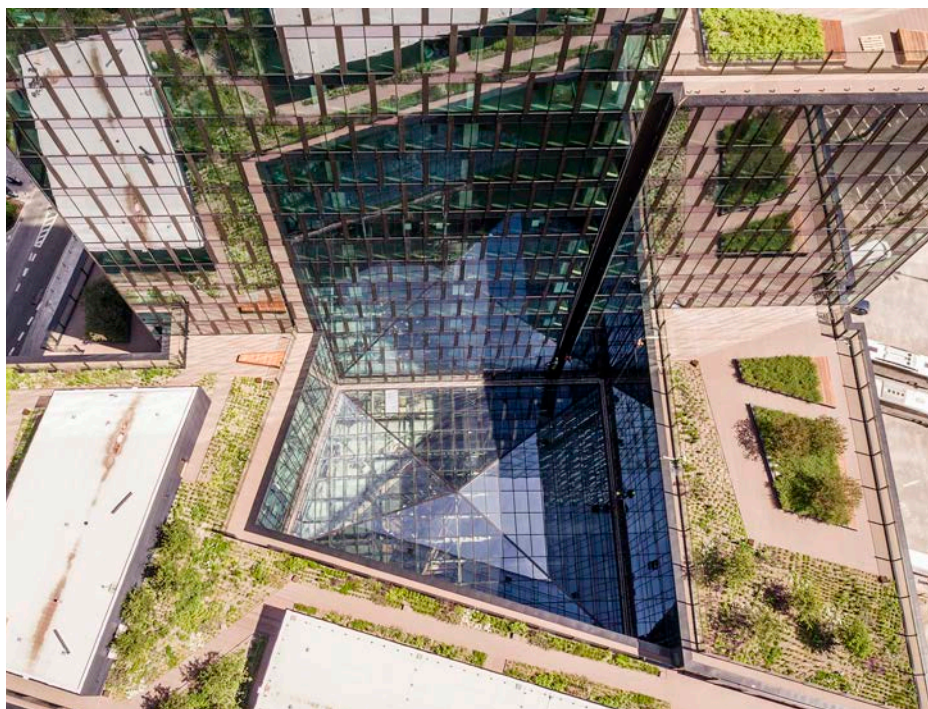


VARSO PLACE





## Varso 1 & 2



**Architect**  
Hermanowicz Rewski  
Architekci

**Location**  
Poland, Warsaw

**Reynaers systems**  
ConceptWall 50-SC  
MasterLine 8

HRA Architects have completed Varso 1 and Varso 2, which, together with the Foster + Partners-designed skyscraper Varso Tower, will comprise the built volume components of Varso Place, a mixed-use development encompassing office, retail, food service and leisure functions. The Varso Place project seeks to revitalize a central brownfield area of Warsaw into a thriving business and recreational hub rooted in an ethos of citizen health and wellness.

## Health, productivity and sustainability

Although the volumes have separate designers, the larger site project was conceived of and managed by the workspace provider HB Reavis and informed by best-practice design and urban renewal. Health, productivity and sustainability were the anchoring principles for the project. The design challenge for HRA was twofold: to integrate sustainable functionality across all aspects of the design whilst also serving as a built connective and aesthetic tissue between the skyscraper beside them and the wider neighbourhood within which they reside.

Varso 1 and 2 accomplish both goals through aesthetically complementing and enhancing other elements of the project rather than competing with them, and by using carefully curated materials and system solutions to maximize sustainability and energy efficiency. Functionally and visually, Varso 1 and 2 form a symbiotic whole with the 310-metre, 53-storey Varso Tower, which currently stands as the tallest building in the EU. The glittering, spire-topped tower may be the showstopper of the production, but Varso 1 and 2 definitely carry the show. Standing at heights of 19 and 21 storeys respectively, the volumes feature limestone and glass facades and are joined by a glass connector, a symbolic umbilical cord between the two structures.





*“When sustainability is inherent throughout the design, the buildings are able to act as a kind of living organisms”*

## Largo Augusto



**Architect**  
Asti Architetti

**Location**  
Italy, Milano

**Reynaers systems**  
ConceptWall 60-SC







KIKO  
MILANO

NEW  
SPARKLING  
HOLIDAY  
COLLECTION

# Urbo business center

**Architect**  
Nuno Ferreira Capa

**Location**  
Portugal, Porto

**Reynaers systems**  
ConceptWall 50



An aerial photograph of a modern architectural complex. The main building is a long, curved structure with a facade of vertical glass panels and white structural elements. It surrounds a central courtyard filled with young trees and greenery. In the background, other buildings and a parking lot are visible under a clear blue sky.

## Îlot Est

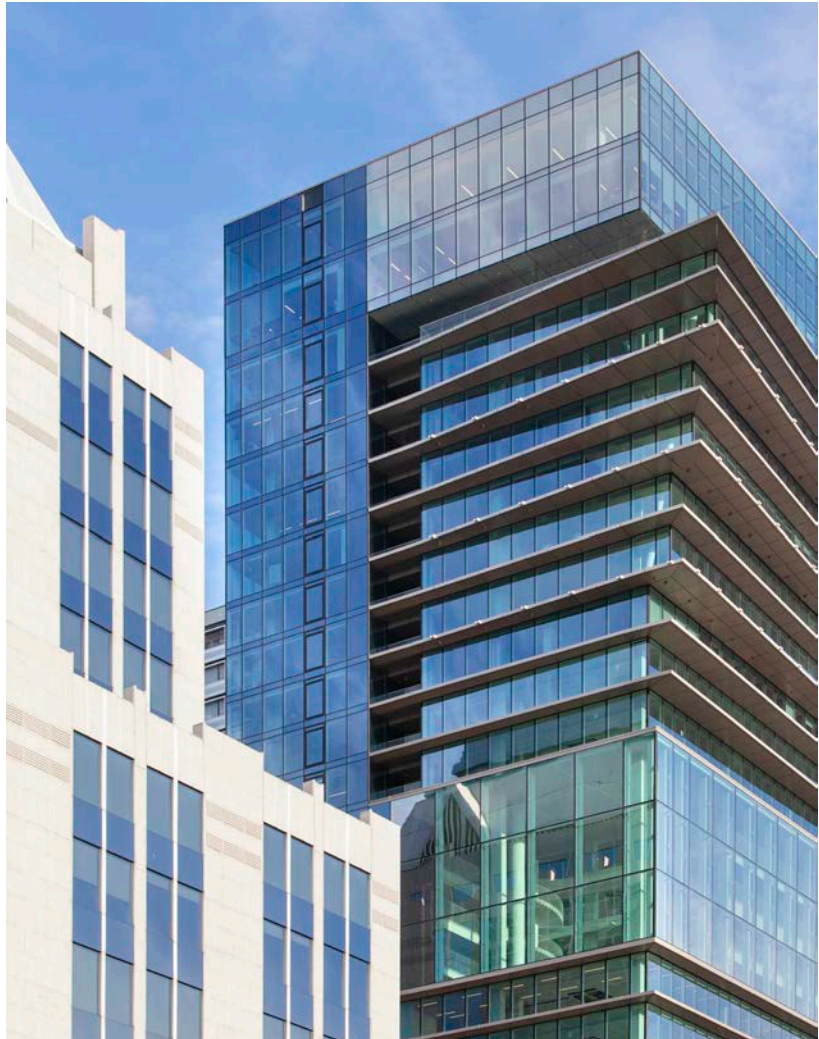
**Architect**  
2PortZamparo

**Location**  
France, Versailles

**Reynaers systems**  
ConceptDoor 50  
ConceptDoor 68  
ThermoSystem 68-HV  
ConceptWall 86  
ConceptWall 50



## Manhattan Center



**Architect**  
Jaspers-Eyers architects

**Location**  
Belgium, Brussels

**Reynaers systems**  
ConceptWall 86-SG

# Polestar HQ

**Architect**

Petr Herman, BornsteinLyckeefors

**Location**

Sweden, Göteborg

**Reynaers systems**

ConceptWall 50



# DC New Logic III

**Architect**  
Habeon Architecten

**Location**  
The Netherlands, Tilburg

**Reynaers systems**  
ConceptFolding 77  
ConceptWall 50



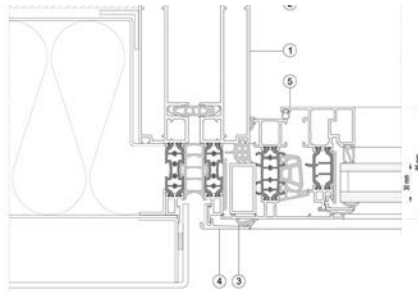


# Crystal

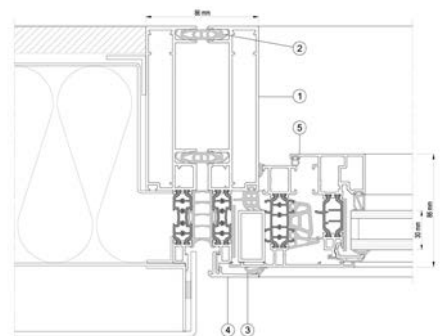
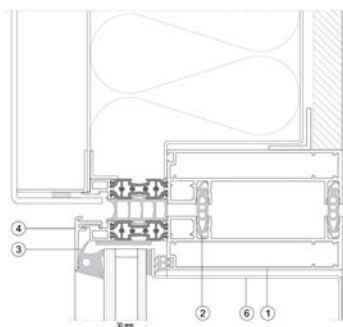
**Architect**  
Libor Hrdousek & Radek Lampa  
(Atelier 15)

**Location**  
Czech Republic, Prague

**Reynaers systems**  
ConceptWall 68 - EF (bespoke  
solution)



1. CW 86-HI/EFbespoke frame profile
2. Linking gasket
3. Outer glazing gasket
4. Glazing bead
5. Window CS 86-HI/HV
6. Shadow box
7. gasket for cascade drainage
8. Support profile
9. Glazing bead for bottom of inclined element
10. Glazing bead for top of inclined element
11. Insulation gasket







# Quion Rock Wine Estate

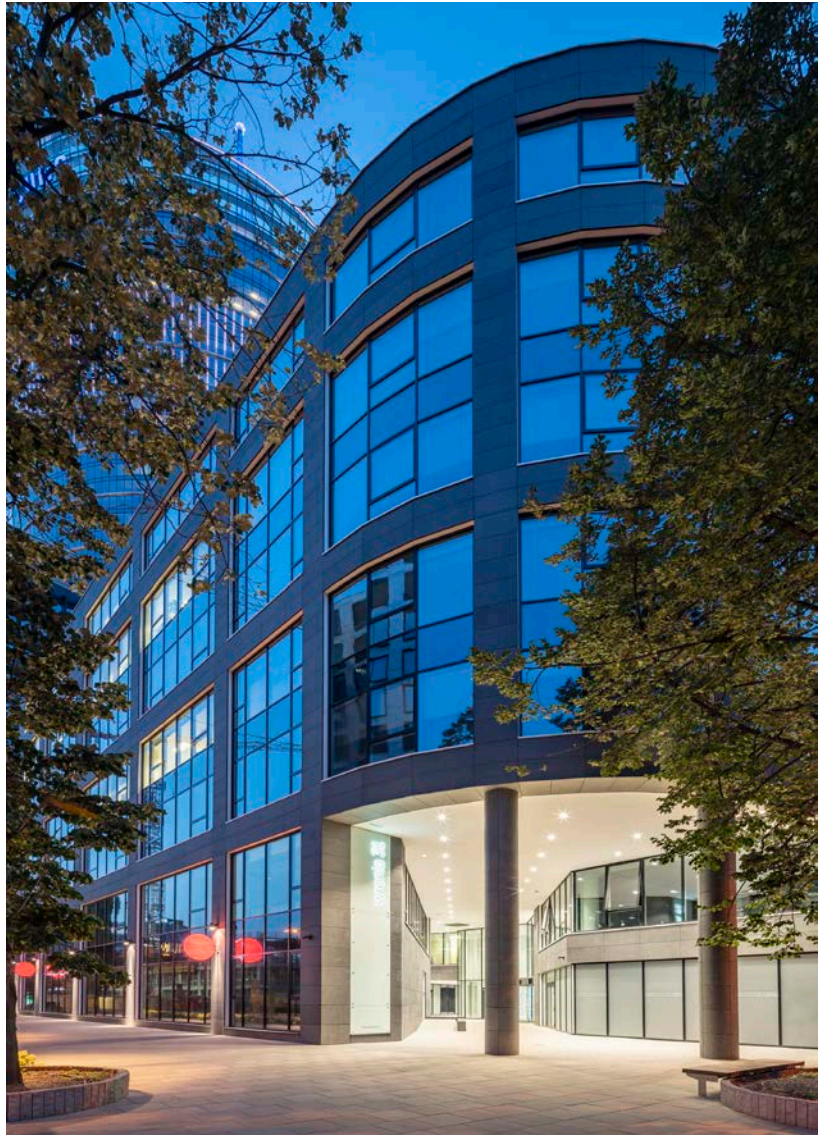
**Architect**  
Dr Yuliya Gaiduk, Garth Carnell

**Location**  
South-Africa, Stellenbosch

**Reynaers systems**  
ConceptSystem 68  
ConceptFolding 77



## Wronia 31



**Architect**  
Jaspers-Eyers architects

**Location**  
Poland, Warsaw

**Reynaers systems**  
ConceptWall 50-HI  
ConceptFolding 77  
ConceptSystem 86-HI

# Pivexin

**Architect**  
MUS Architects

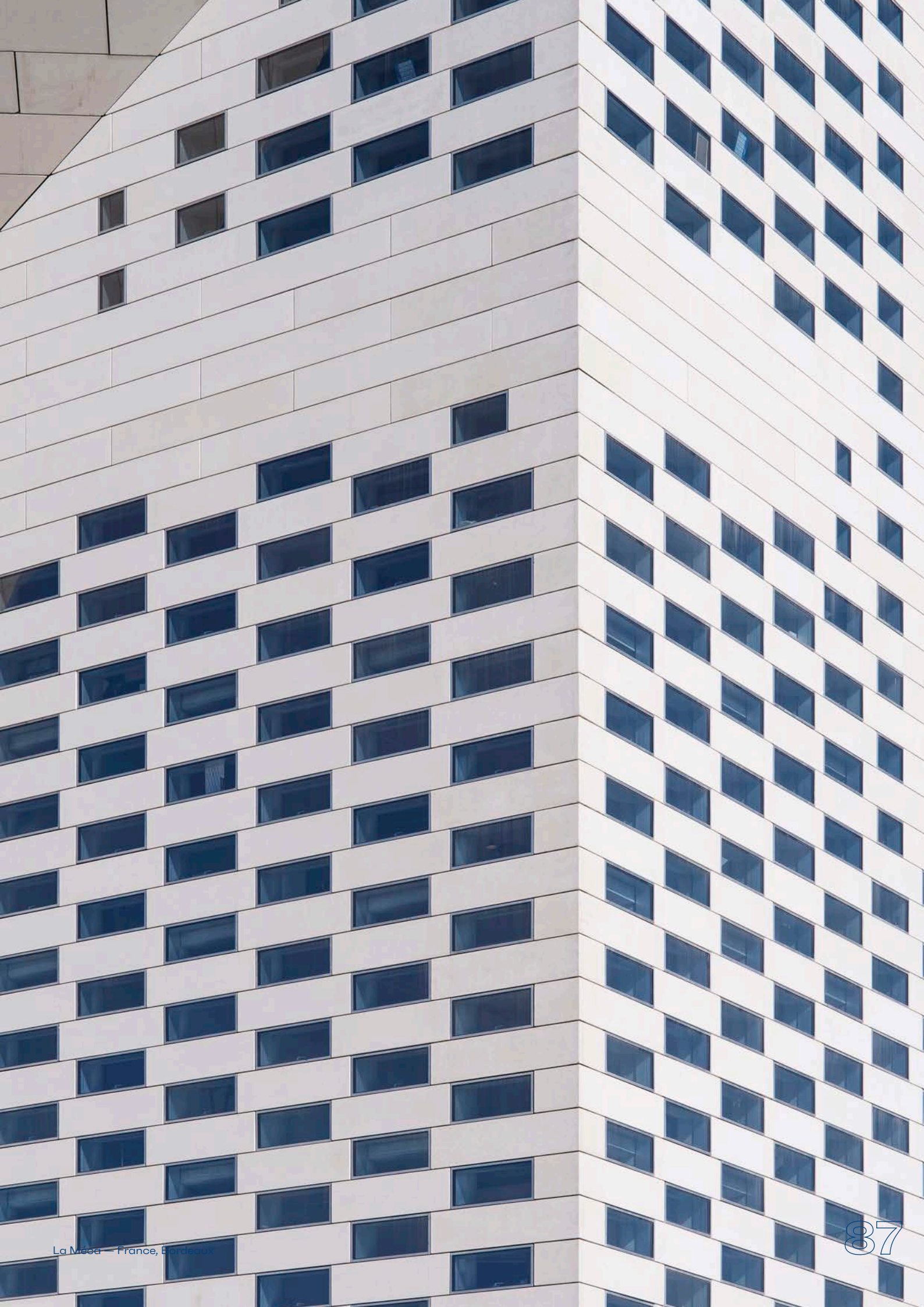
**Location**  
Poland, Babice

**Reynaers systems**  
CI45





# Public buildings







## La Méca



**Architect**  
Freaks Architecture BIG  
(Bjarke Ingels Group)

**Location**  
France, Bordeaux

**Reynaers systems**  
ConceptDoor 68  
ConceptPatio 130 (-LS)  
ConceptWall 86  
ConceptWall 50

Bordeaux's monumental new cultural hub MÉCA (Maison de l'Économie Créative et de la Culture en Aquitaine) stands as a totemic presence on the banks of the Garonne River. The first project on French soil for Danish practice BIG-Bjarke Ingels Group, this joint design with Parisian firm Freaks Architecture posed as much of a technical as an urban design challenge. Nearly a thousand pixel-windows perforate the building's shell in an exacting design specification that Reynaers Aluminium is proud to have helped meet.

*“A magical, transparent place that encourages a flow of movement between the city, the Garonne riverfront and the train station - and that’s exactly what he got.”*





## A Cultural Gateway

M&C A's asymmetrical arch – 37 m high by 120 m wide – distorts perspectives and vanishing points. “The building forms a single vertical loop, sweeping from the former slaughterhouses to the Garonne waterfront around a hollow central space linked by rising promenades from both sides,” explains Danish architect Bjarke Ingels, the founder of BIG. This new multidisciplinary arts venue stands in the heart of the up-and-coming area around Saint Jean train station on Bordeaux’s right bank. Over some 13,000 m<sup>2</sup> M&C A brings together three regional arts agencies – FRAC (regional collection of contemporary art), OARA (performing arts) and ECLA (cinema, literature and audiovisuals) – under one roof. President of the regional council Alain Rousset wanted “a magical, transparent place that encourages a flow of movement between the city, the Garonne riverfront and the train station” – and that’s exactly what he’s got, with the opening last summer of this “regional hub of cultural activity”.

## Flush façade

Combining two distinct structures, the arch rests on two concrete piers connected across their two upper levels by a steel-framed bridge. Delivery of the structural works and shell was led by GTM Bâtiment Aquitaine (Vinci Construction France), and the participating construction companies had to overcome a host of technical challenges to stay true to the project’s design aesthetic. Central to the project managers’ intentions was to create a flush facade of limited depth.



# Knowledge Centre Arhus

**Architect**  
2PortZamparo

**Location**  
Belgium, Roeselare

**Reynaers systems**  
ConceptPatio 155 (-LS)  
ConceptWall 50 (bespoke solution)  
ConceptSystem 86 (bespoke solution)

# Bishop's Basilica of Philippopolis

## Architect

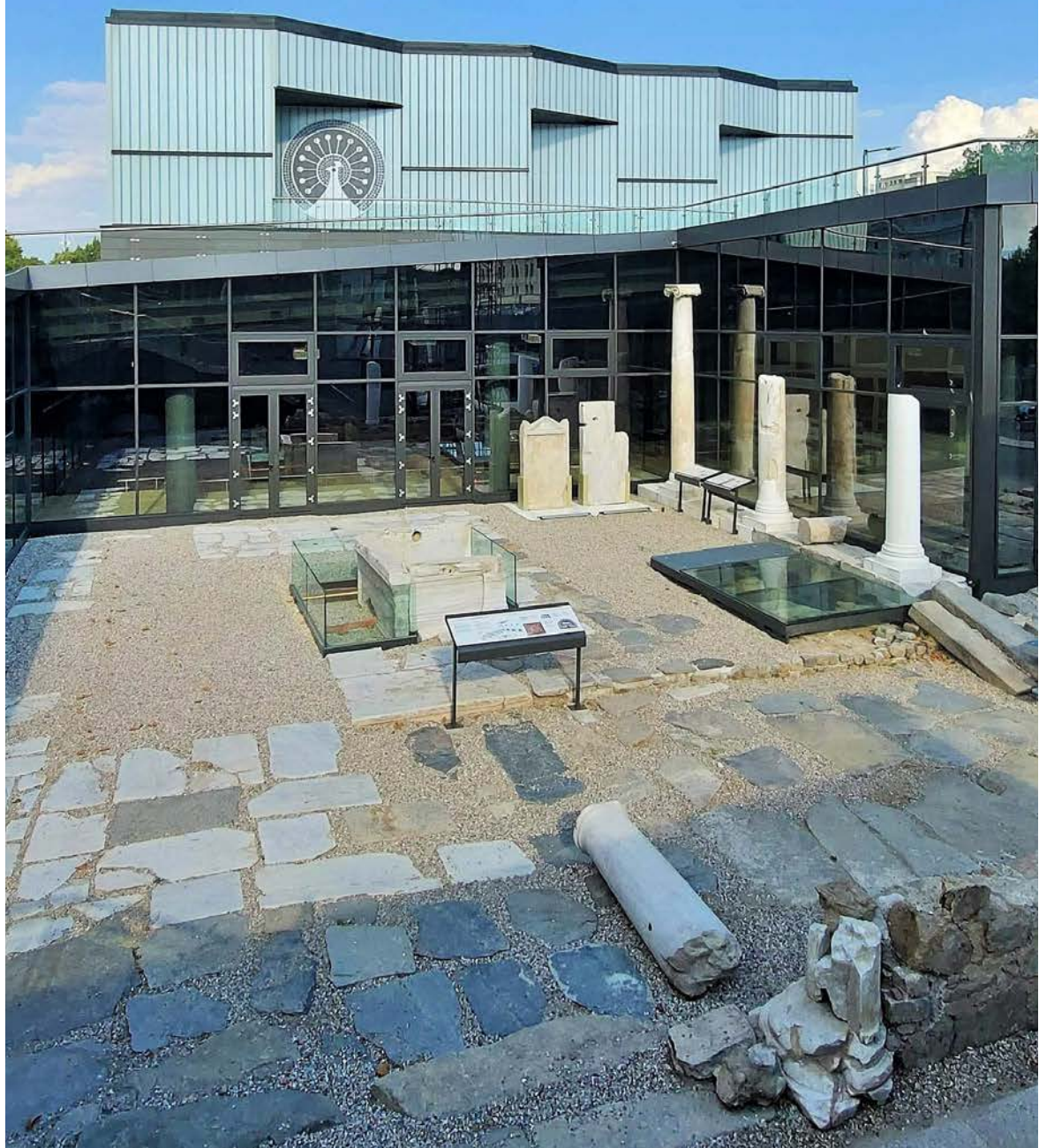
Krassimir Todorov, Milena Krachanova,  
Atelier DUO, Architectural Studio Zoom,  
Abstract, Skolnik Architecture and Design

## Location

Bulgaria, Plovdiv

## Reynaers systems

ConceptWall 50-SC  
ConceptSystem 77



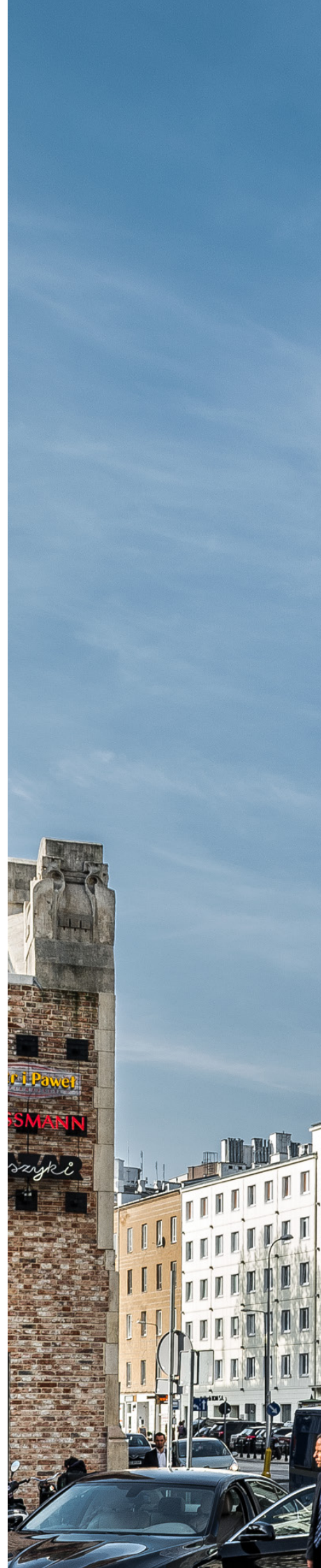
## The Nest



**Architect**  
Grupa 5 Sp. z o.o.

**Location**  
Poland, Warsaw

**Reynaers systems**  
ConceptPatio 155 (-LS)  
ConceptWall 50-HI





# Z33

**Architect**  
Francesca Torzo

**Location**  
Belgium, Hasselt

**Reynaers systems**  
SlimLine 38  
ConceptWall 50





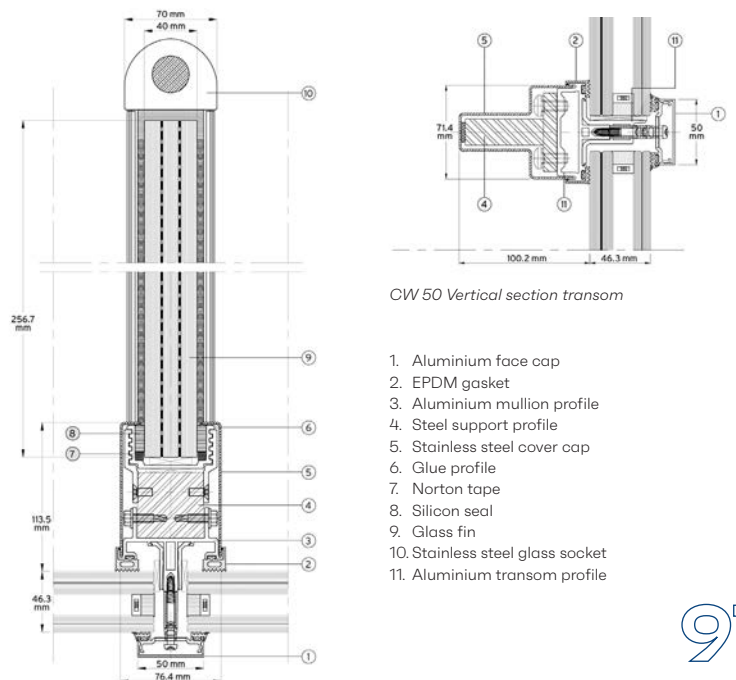


# Qatar National Convention Centre

**Architect**  
Arata Isozaki

**Location**  
Qatar, Doha

**Reynaers systems**  
ConceptSystem 59PA  
ConceptSystem 68  
ConceptWall 50 (bespoke solution)



# Vennesla Library

**Architect**  
Helen & Hard AS

**Location**  
Norway, Vennesla

**Reynaers systems**  
ConceptSystem 59PA  
ConceptWall 50 - HI



# Sun City

**Architect**

GMP, Naqsh-e Jahan Pars

**Location**

Iran, Teheran

**Reynaers systems**

ConceptSystem 59

ConceptWall 50

ConceptWall 60



# Pierres Vives

## Architect

Zaha Hadid, Stephane Hof,  
Chabanne et Partenaires

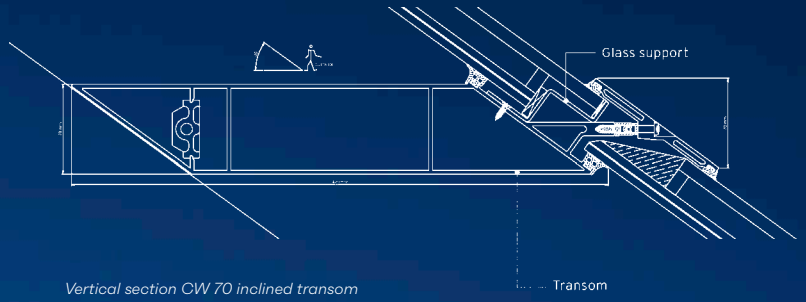
## Location

France, Montpellier

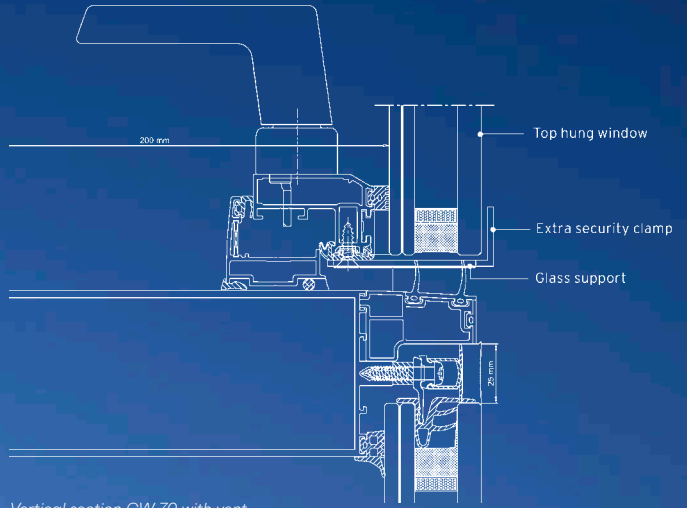
## Reynaers systems

ConceptWall 50 -SC  
(bespoke solution)





Vertical section CW 70 inclined transom



Vertical section CW 70 with vent



# Hotels

A photograph of the Antakya Museum Hotel building at dusk. The building features a prominent, dark, angular roof structure and a facade composed of various levels and volumes. Numerous windows are illuminated from within, creating a warm glow against the darkening sky. The architecture is modern and geometric, with a mix of dark and light tones.

# Antakya Museum Hotel

**Architect**  
Emre Arolat

**Location**  
Turkey, Hatay

**Reynaers systems**  
ConceptSystem 68  
ConceptWall 50







## Radisson Collection Hotel



### Architect

John Fotiadis, Christina Gabas,  
Damien Figueras, Ingo Maurer,  
Tamara Kvesitadze, Xavier Fabre

### Location

Georgia, Tsinandali

### Reynaers systems

ConceptWall 50  
ConceptSystem 77  
HiFinity  
ConceptPatio 155 (-LS)



# The Monument Thong Lo

**Architect**  
Quintrix Architects

**Developer**  
Sansiri Public

**Location**  
Thailand, Bangkok

**Reynaers systems**  
ConceptPatio 96  
ConceptPatio 130  
ConceptPatio 68  
ConceptSystem 59PA  
ConceptFolding 68  
ConceptFolding 77

# Four Seasons Hotel

## Architect

Skidmore, Owings & Merrill LLP

## Location

Bahrain, Manama

## Reynaers systems

ConceptPatio 96

ConceptSystem 77 -FP

ConceptWall 86 -EF

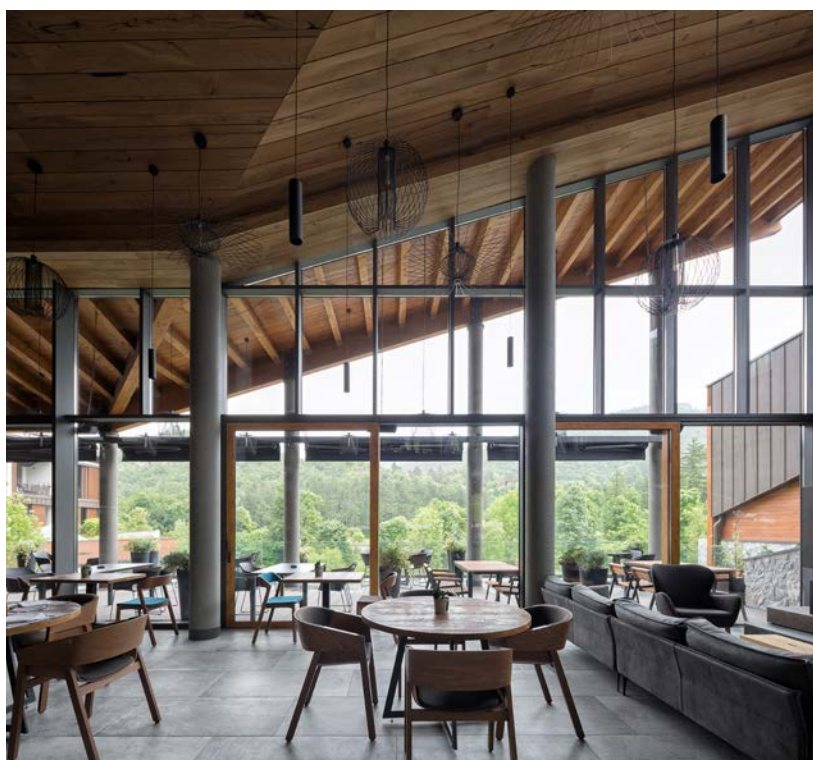
(bespoke solution)

ConceptWall 50-SC

(bespoke solution)



# Ramonda Mountain hotel and spa



**Architect**

Valerija Fa Milić & Vladimir Milić

**Location**

Serbia, Rtanj

**Reynaers systems**

ConceptWall 50-HI  
ConceptPatio 155 (-LS) HI  
ConceptSystem 77-HI







## Hotel Altapura

**Architect**  
Studio Arch

**Location**  
France, Val Thorens

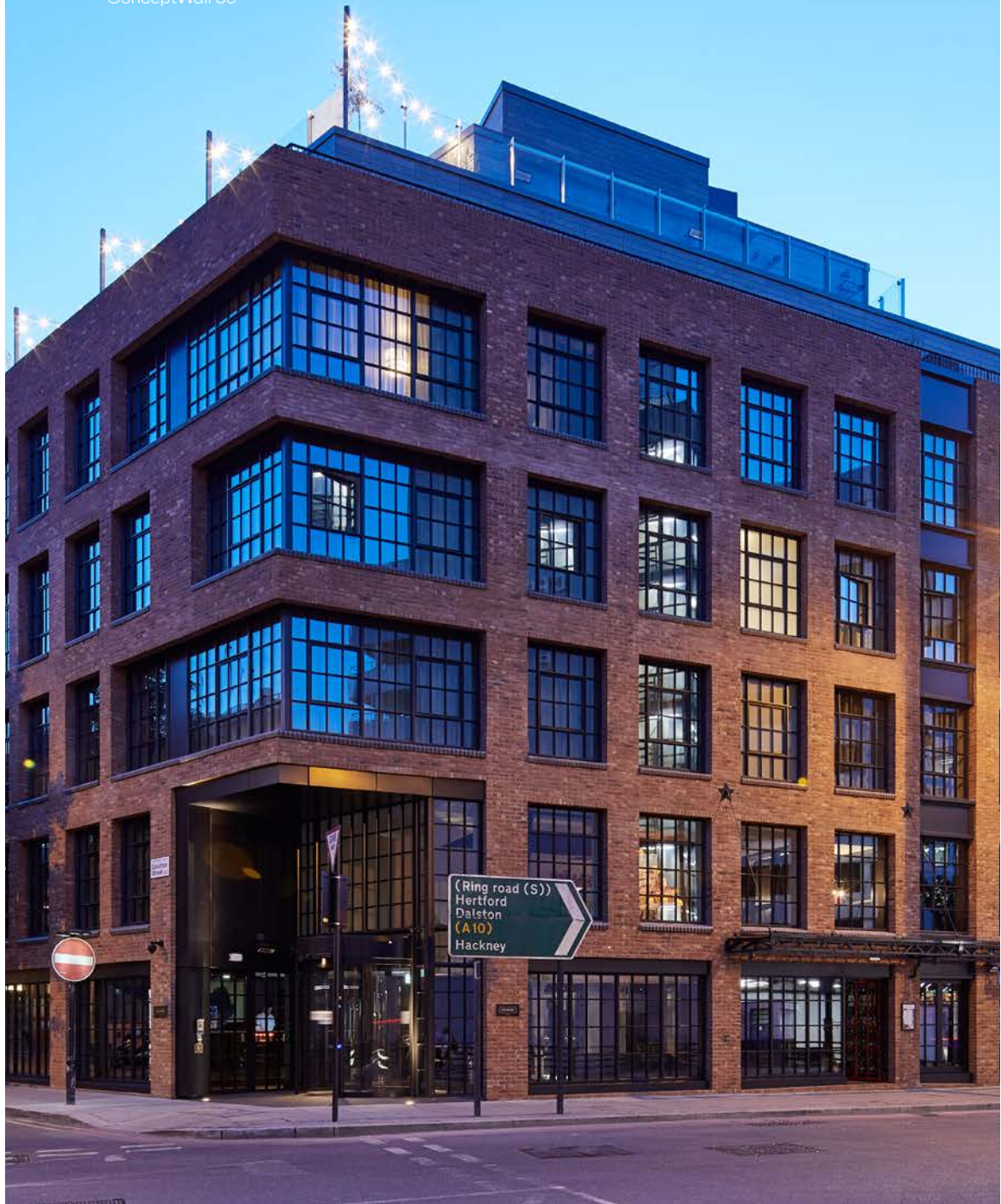
**Reynaers systems**  
ConceptWall 60

# The Curtain

**Architect**  
Dexter Moren Associates

**Location**  
UK, Shoreditch

**Reynaers systems**  
SlimLine 38  
ConceptPatio 130 (-LS)  
ConceptWall 50



**Leisure**







# Perth Arena

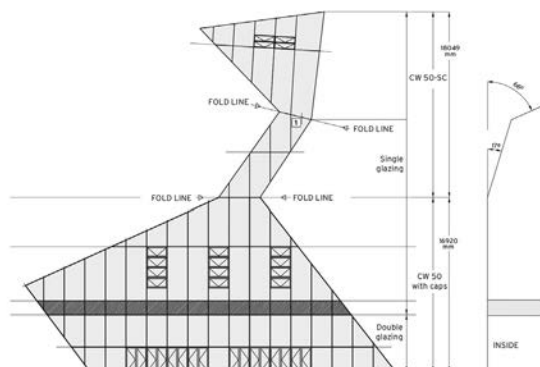
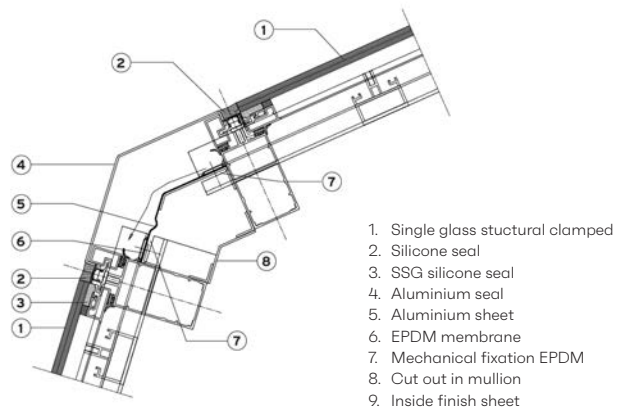


**Architect**  
ARM+CCN, a joint venture of  
ARM Architecture and CCN  
Architects

**Location**  
Australia, Perth

**Reynaers systems**  
ConceptWall 50-SC  
(bespoke solution)

The design of Perth Arena is based on Christopher Monckton's Eternity Puzzle, a puzzle filling an almost regular dodecagon (polygon with twelve sides and twelve angles) with 209 irregularly shaped smaller polygon pieces. The architects designed an impressive, flexible concert venue and sporting events stadium. It is a piece of architecture that resembles a giant and complex jigsaw puzzle.



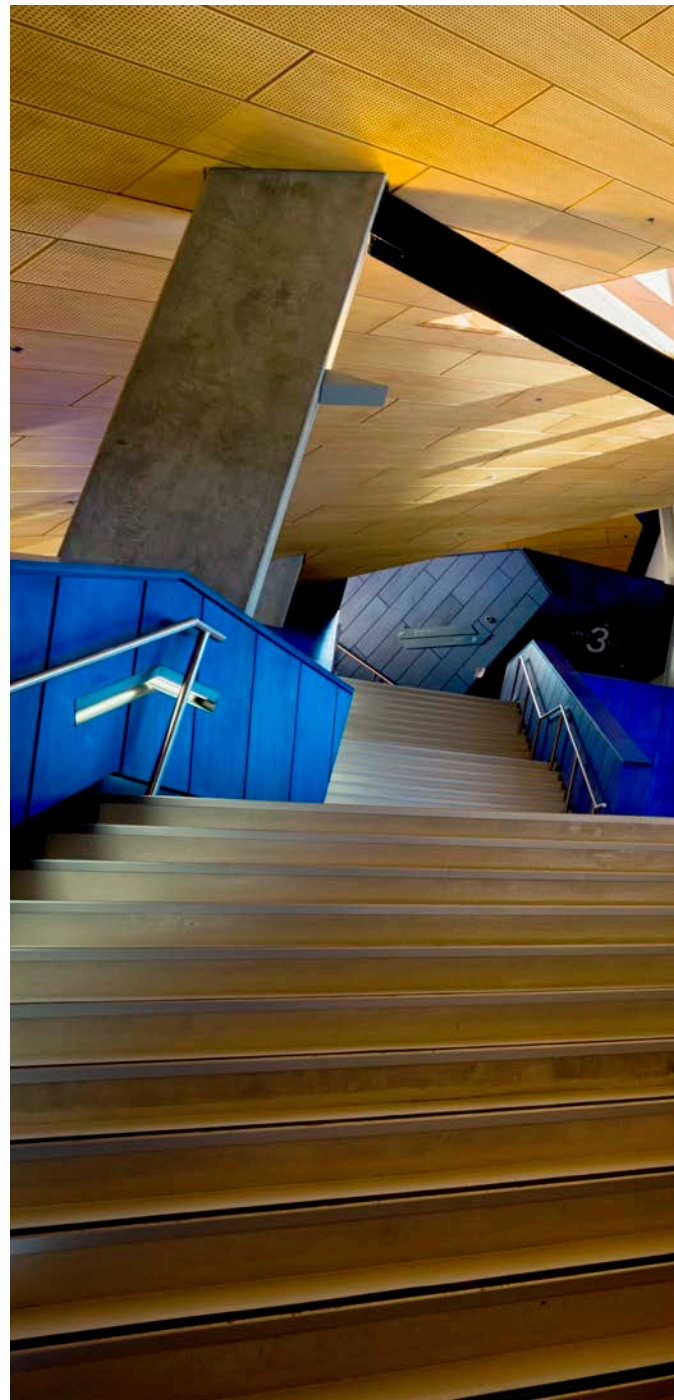
## Jigsaw puzzle

With its 9800 triangular panels and a thousand rectangular panels, its architects - Ashton Raggatt McDougall (ARM) and Cameron Chisholm Nicol (CCN) – appear to have used the rhetoric of the puzzle to describe the building's outward and inward aesthetics. However, this interpretation is rather superficial, based on subsequent impressions rather than the architects' original ideas.

The idea of the puzzle can be extended to the very essence of the building. Containing a flexible concert venue and sporting events stadium with a capacity of 15,000 people, where coaches can drive directly onto the arena floor, and featuring five multipurpose function rooms, a 686-bay car park in the basement, a 56-metre by 35-metre retractable roof that opens in just seven minutes, 36 corporate suites, and half a dozen food and beverage outlets; the building is highly complex. Interlocking basket-ball courts slide over tennis courts. It is easy to see how a puzzle became the vehicle for its external expression. Its sheer multi-functionality makes Perth Arena an impressive giant 3D puzzle and piece of architecture.

## Eternity

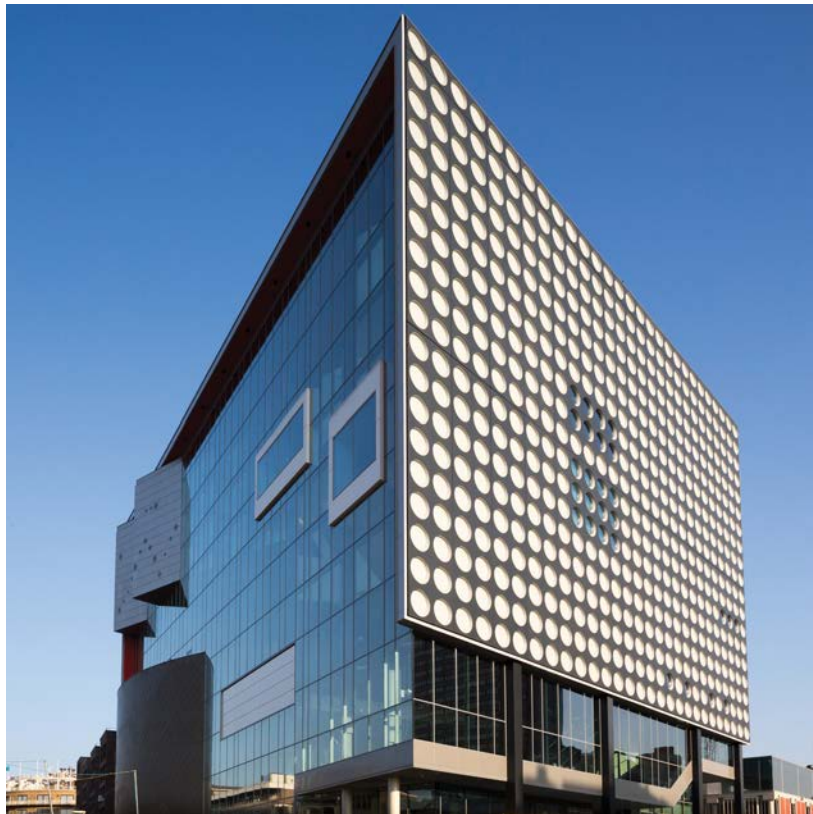
The complex is based on 'Eternity,' a puzzle that was launched in 1999. Thought to be practically unsolvable, its manufacturer offered a £1 million prize for whomever could solve it within four years. Unsurprisingly, it became a global craze, and was solved about a year after its launch. By the time Eternity Puzzle II came out in 2007, preparatory construction work for Perth Arena had already begun.



*“It is a piece of architecture that resembles a giant and complex jigsaw puzzle.”*



## Tivolivredenburg



### Architect

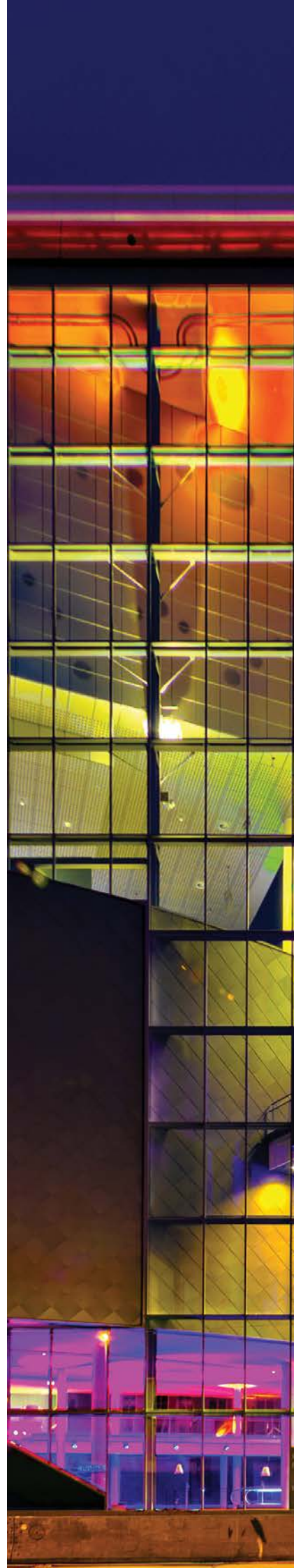
Thijs Asselbergs  
architectuurcentrale NL Architects  
Architectuurstudio HHJo Coenen  
& CO Architecten

### Location

The Netherlands, Utrecht

### Reynaers systems

ConceptSystem 77  
ConceptWall 60 (bespoke solution)











## Ferrari World



**Architect**  
Benoy Architects

**Location**  
UAE, Abu Dhabi

**Reynaers systems**  
ConceptWall 86 - EF





## ABOUT REYNAERS ALUMINIUM

*“Our goal is to increase the value of buildings and to enhance the living and working environment of people worldwide.”*

As a part of the Reynaers Group, Reynaers Aluminium is a leading specialist in the development, distribution and commercialization of innovative and sustainable aluminium architectural solutions. These include a wide variety of window and door systems, curtain walls, sliding systems, and conservatories. Besides the extensive range of standard solutions, we also develop customized solutions, tailored to the individual customer or project.

Reynaers Aluminium has been founded in 1965, and is currently employing over 2400 workers in more than 40 countries worldwide and exporting to more than 70 countries on 5 continents. Reynaers Group achieved an annual turnover of 555 million euros in 2020.

The company's success is strengthened by our close partnership with 5,000 partner fabricators, architects, and project developers worldwide. This unique cooperation reflects in our motto: Together for better.

At the Reynaers Campus, we focus on sharing knowledge and experience with architects, fabricators, contractors and other building partners while inspiring with new technologies. Next to the Technology, Training and Automation Centre, the Reynaers Campus also has its own Experience Centre where future buildings can be explored in our virtual reality room Avalon.

For more information: [www.reynaers.com](http://www.reynaers.com)



**Reynaers  
Aluminium**

Oude Liersebaan 266  
B-2570 Duffel

T +32 (0)15 30 88 10  
info@reynaers.com

[www.reynaers.com](http://www.reynaers.com)